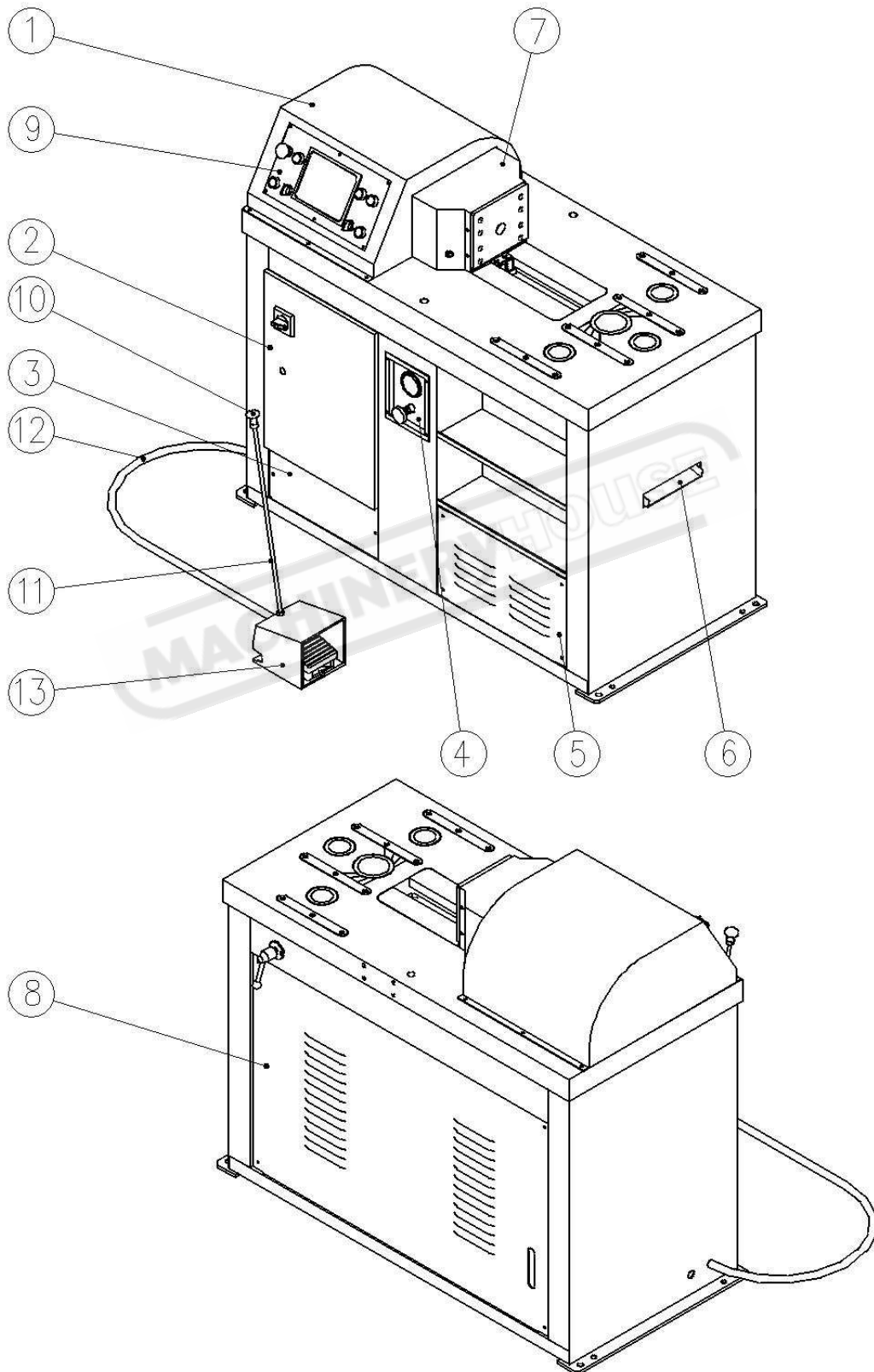




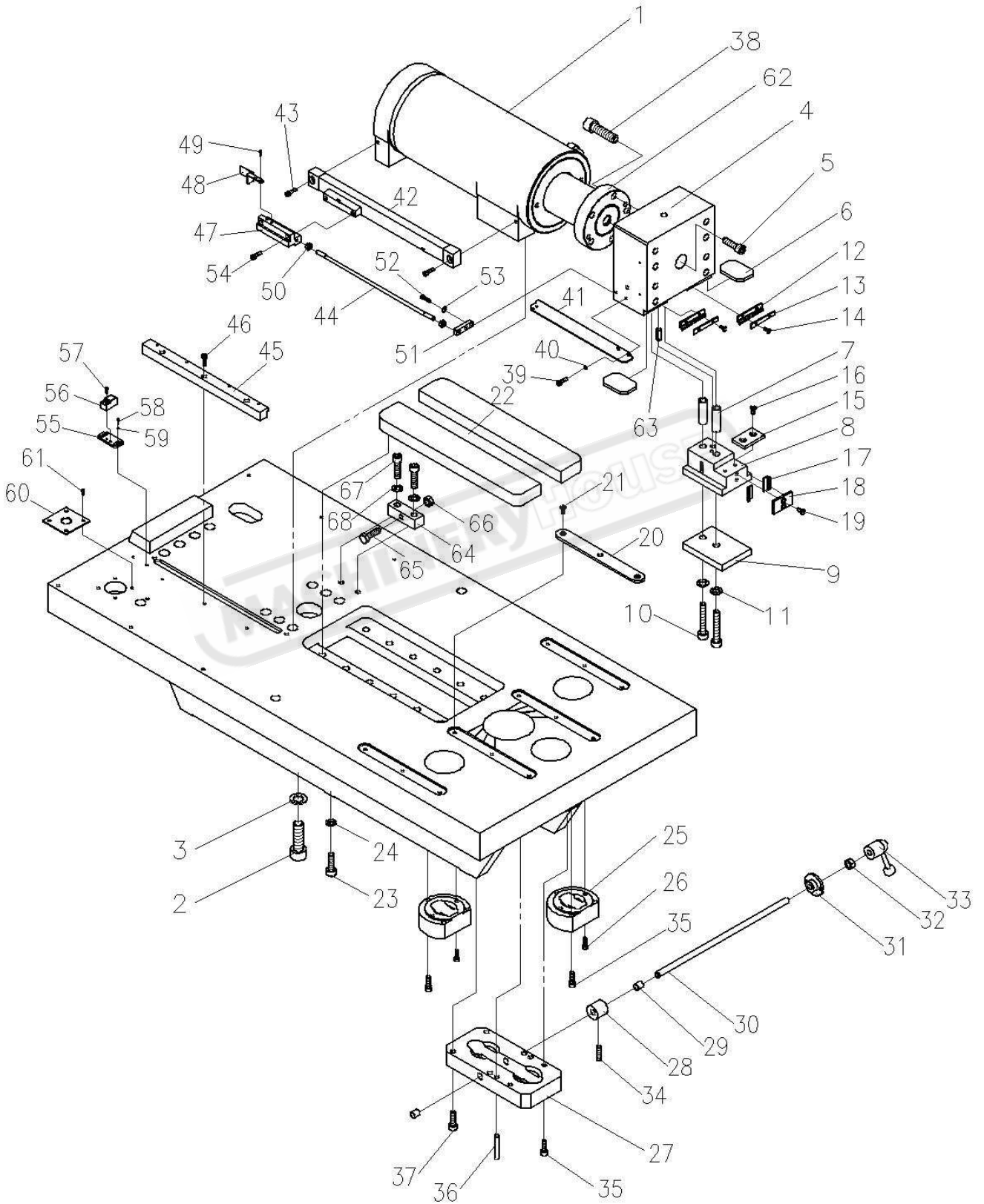
HBM-40



HBM-40-3D-2011



HBM-40





Sunrise Bending Machine Parts List

Model: **HBM-40** Part: **Frame**

Date: 12/2011

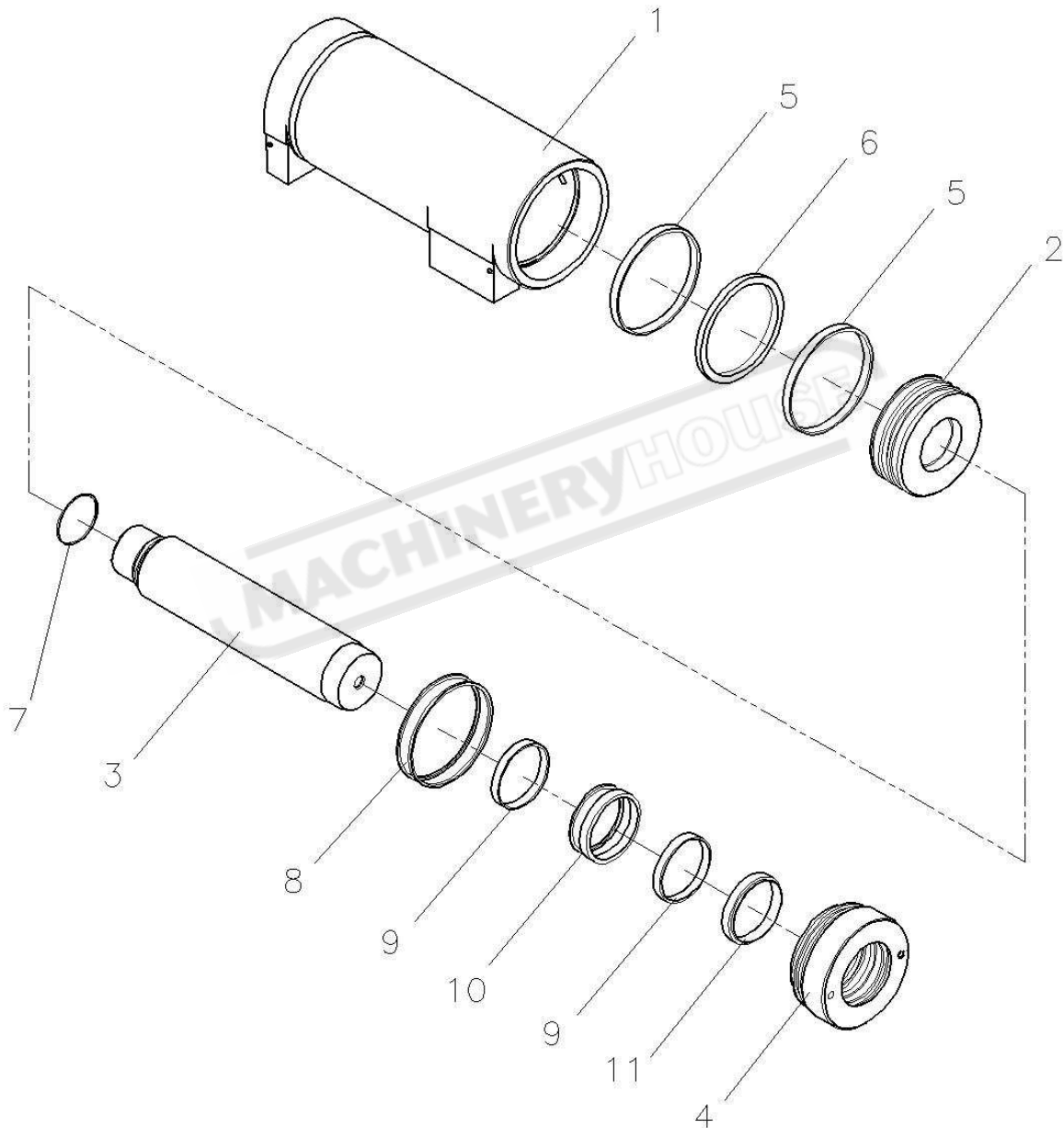
Item	Part Number	Description	產品名稱	Q'ty	Memo
1	226103900C	Cylinder Set	油壓缸	1	
2	510932321420050	Hex Bolt M20X50	六角承窩頭螺栓	10	
3	56303A00020	Spring Washer M20	彈簧墊圈	10	
4	226101013C	Die Set Bolster	模座	1	
5	56301A0020065	Hex Bolt M20X65	六角承窩頭螺栓	1	
6	226101014	Die Set Bolster Gasket	模座下墊塊	2	
7	226101026	Guide Block Bushing Pin	引導塊墊圈/銷	2	
8	226101011	Guide Block	引導塊	1	
9	226101025	Guide Block Gasket	引導塊墊塊	1	
10	56301A0012090	Hex Bolt M12X90	六角承窩頭螺栓	2	
11	56303A00012	Spring Washer M12	彈簧墊圈	2	
12	226101027	Dust Scrape Piece(1)	防塵刮片(一)	2	
13	226101028	Scrape Piece Pressure Plate	刮片壓板	2	
14	56301I0005008	Button Head Capscrew M5X8	半圓內六孔	4	
15	226101012	Die Set Bolster Gasket	模座下墊塊	1	
16	56301F0006008	Sunk Head Hex Bolt M6X8	皿內六孔	2	
17	226101030	Dust Scrape Piece(2)	防塵刮片(二)	2	
18	226101029A	Scrape Piece Anchor Plate	刮片固定板	1	
19	56301F0006008	Sunk Head Hex Bolt M6X8	皿內六孔	2	
20	226101024B	Prevent Scratch Gasket	防刮傷墊塊	4	
21	56301F0006008	Sunk Head Hex Bolt M6X8	皿內六孔	12	
22	226101009C	Slide Base	滑座	2	
23	56301A0012040	Hex Bolt M12X40	六角承窩頭螺栓	12	
24	56303A00012	Spring Washer M12	彈簧墊圈	12	
25	226101017A	Blade Fix Plate (2)	固定座(二)	2	
26	56301A0006030	Hex Bolt M6X30	六角承窩頭螺栓	4	
27	226101016	Blade Fix Plate (1)	固定座(一)	1	
28	226110004	Ecentric locking block	模具固定塊	1	
29	56309BLFB1215	Bearing	乾式軸承	2	
30	226110005	Blade Fix Plate Axle	固定塊軸心	1	
31	226110006	Blade Fix Plate Axle Bushing	固定塊軸心襯套	1	
32	56302B0112	NTU M12	螺帽	1	
33	56315502025M12	Tension Levers	煙斗把手	1	
34	56307A012	9040-M12	定位珠	1	

Model: **HBM-40**Part: **Frame**Date: 12/2011

Item	Part Number	Description	產品名稱	Q'ty	Memo
35	56301A0008045	Hex Bolt M8X45	六角承窩頭螺栓	8	
36	56306S0100060	Spring Pin ϕ 10X60	彈簧銷	2	
37	56301A4010045	Hex Bolt M10X45	六角承窩頭螺栓	4	
38	56301A0012040	Hex Bolt M12X40	六角承窩頭螺栓	5	
39	56301A0005012	Hex Bolt M5X12	六角承窩頭螺栓	2	
40	56303A00005	Spring Washer M5	彈簧墊圈	2	
41	226102028B	Gauge fixing plate	光學尺電線導軌護蓋	1	
42	52505AT11250T	Linear Scale	光學尺	1	
43	56301A0006025	Hex Bolt M6X25	六角承窩頭螺栓	2	
44	226101034	Gauge pull rod	光學尺拉桿	1	
45	226101035	Gauge sensor rail	光學尺讀頭座滑軌	1	
46	56301A0006030	Hex Bolt M6X30	六角承窩頭螺栓	3	
47	226201036	Gauge sensor fixing block	光學尺讀頭座(活動)	1	
48	226202016	Origin actuator	零點觸塊	1	
49	56301I0004008	Button Head Capscrew M4X8	半圓內六孔	2	
50	56302B0108	NTU M8	螺帽	2	
51	226201039	Pull rod fixing block	拉桿固定座	1	
52	56301A0006020	Hex Bolt M6X20	六角承窩頭螺栓	2	
53	56303A00006	Spring Washer M6	彈簧墊圈	2	
54	56301A4006025	Hex Bolt M6X30	六角承窩頭螺栓	2	
55	33N011024	Proximity fixing block	近接開關固定座	1	
56	524090TLQ5MC1Z	Orgin proximity sensor	方型近接開關	1	
57	56301G0003020	Button Head Capscrew M3X20	丸頭十字	2	
58	56301A0005012	Hex Bolt M5X12	六角承窩頭螺栓	2	
59	56303A00012	Spring Washer M12	彈簧墊圈	2	
60	226101033	Wire hole plate	接頭固定座	1	
61	56301A0005012	Hex Bolt M5X12	六角承窩頭螺栓	4	
62	226103014	Rod-bolster join plate	模座支持塊	1	
63	56306S0100025	Spring Pin ϕ 10X25	彈簧銷	1	
64	226201040	Cylinder fixing block	油壓缸固定座	1	
65	56301D0012040	Bolt M12X40	六角頭螺栓	1	
66	56302B0112	NTU M12	螺帽	1	
67	56301A0012045	Hex Bolt M12X45	六角承窩頭螺栓	2	
68	56303A00012	Spring Washer M12	彈簧墊圈	2	



HBM-40 Cylinder Assembly



PART6103B.DWG 12/2011



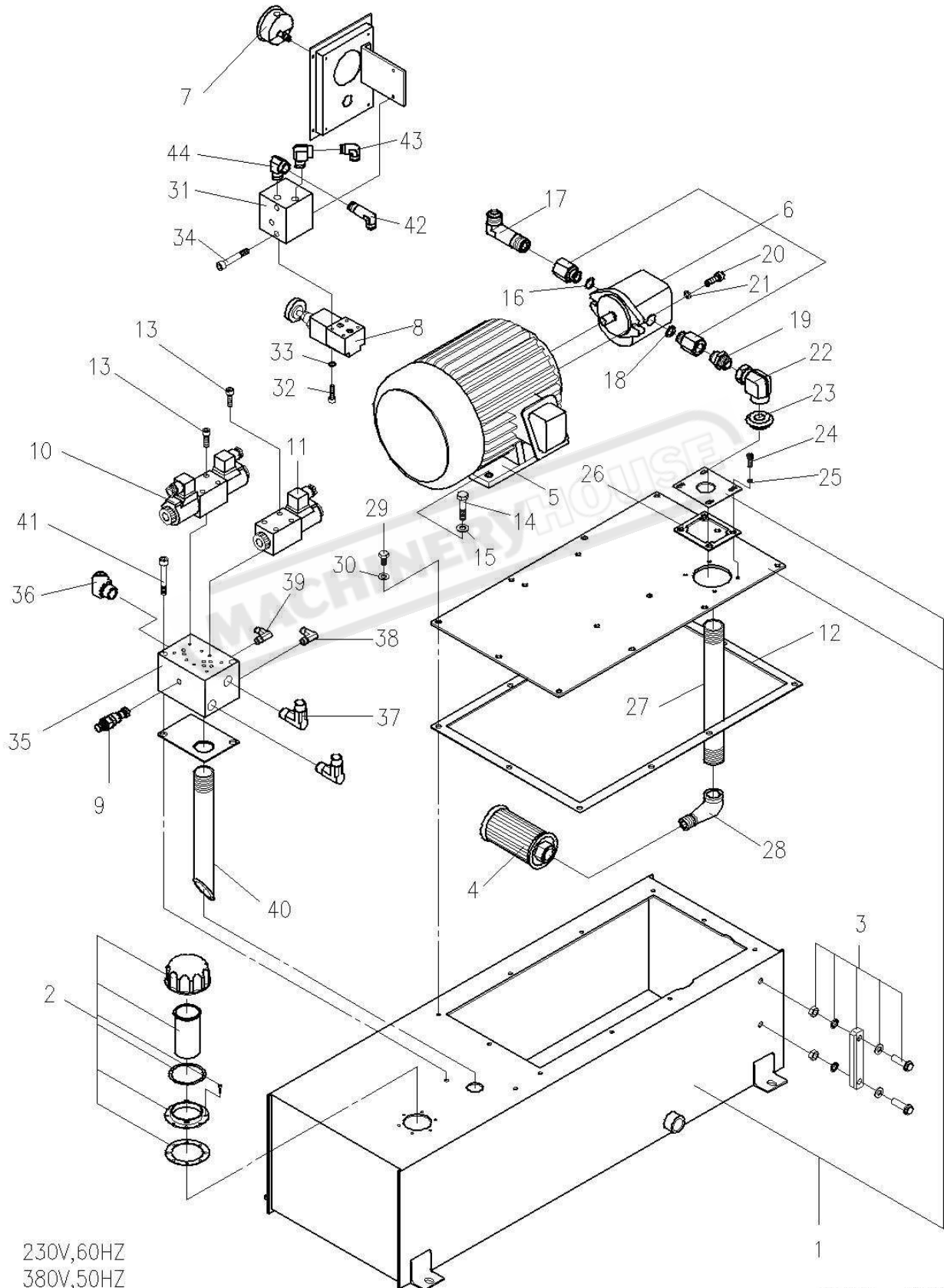
Sunrise Bending Machine Parts List

Model: **HBM-40**Part: **Cylinder Assembly**Date: 11/2011

Item	Part Number	Description	產品名稱	Q'ty	Memo
1.	226103902C	Cylinder Pipe	缸管	1	
2.	213003003C	Piston	活塞	1	
3.	226103002B	Piston Rod	活塞桿	1	
4.	213003002A	Cylinder Rod Cover	前蓋	1	
5.	53407WN12506000500	Wear Ring	耐磨環	2	
6.	534020203R538106000379A	Piston Seal	活塞環	1	
7.	53403G070	O-Ring	O型環	1	
8.	534013003900B 534032358 534048358	O-Ring + Back Up Ring	O型環+背托環	1	
9.	53407WN12503750500	Wear Ring	耐磨環	2	
10.	5340525003500375B 534041016089003	U Packing + Back Up Ring	U型油封+背托環	1	
11.	53406H3500	Dust Seal	防塵油封	1	



HBM-40 Hydraulic Components



230V,60HZ
380V,50HZ

6112B0MB 12/27/2011



Sunrise Bending Machine Parts List

Model: **HBM-40** Part: **Hydraulic Components Assembly** Date: 12/2011

Item	Part Number		Description	產品名稱	Q'ty	Memo
1.	226102910B	226102020A 226102017C 811602048	Oil Tank	油箱	1	
2.	53702HY08A		Filter Breather	注油器	1	
3.	53701LG4		Oil Level Gauge	油面計	1	
4.	53301MF086		Suction Filer	濾油網	1	
5.	5HP 50Hz	380V : 52301050JN 400V : 52301050JN 415V : 52301050JN	Motor	馬達	1	
	5HP 60Hz	220V : 52301050FG 230V : 52301050FG 380V : 52301050FG 460V : 52301050FG 575V : 52301050BD				
	5HP 60Hz	220V : 52303050LK 380V : 52303050LK				
6.	50Hz.: 53201ALP2AS10C1FA 60Hz.: 53201ALP2AS10C1FA		Pump	泵浦	1	
7.	5362135DSK		Pressure Gauge	埋入式正中央壓力錶		
8.	53657DG02H22		Relief Valve	壓力控制閥	1	
9.	53656RPECFAN		Relief Valve	洩壓閥	1	
10.	53651DFA02005		Solenoid Valve	電磁閥	1	
11.	53651DFA03001		Solenoid Valve	電磁閥	1	
12.	211303008		Oil Tank Cover Seal	油箱油封	1	
13.	56301A0005045		Hex Bolt M5X45	六角承窩頭螺栓	8	
14.	56301D0010030		Bolt M10X30	六角頭螺栓	4	
15.	56303A00010		Spring Washer M10	彈簧墊圈	4	
16.	53403P020VT		O-Ring	O 型環	1	
17.	56203810808		1/2" Pipe 90 degree joint	接頭 1/2" T 長 X 1/2" H 90°	1	
18.	53403P024VT		O-Ring	O 型環	1	
19.	56203111212		Pipe joint	直接頭 3/4TX3/4H	1	
20.	56301A0010030		Hex Bolt M10X30	六角承窩頭螺栓	2	
21.	56303A00010		Spring Washer M10	彈簧墊圈	2	
22.	562313112		3/4" 90 degree joint	90°活動接頭 3/4	1	

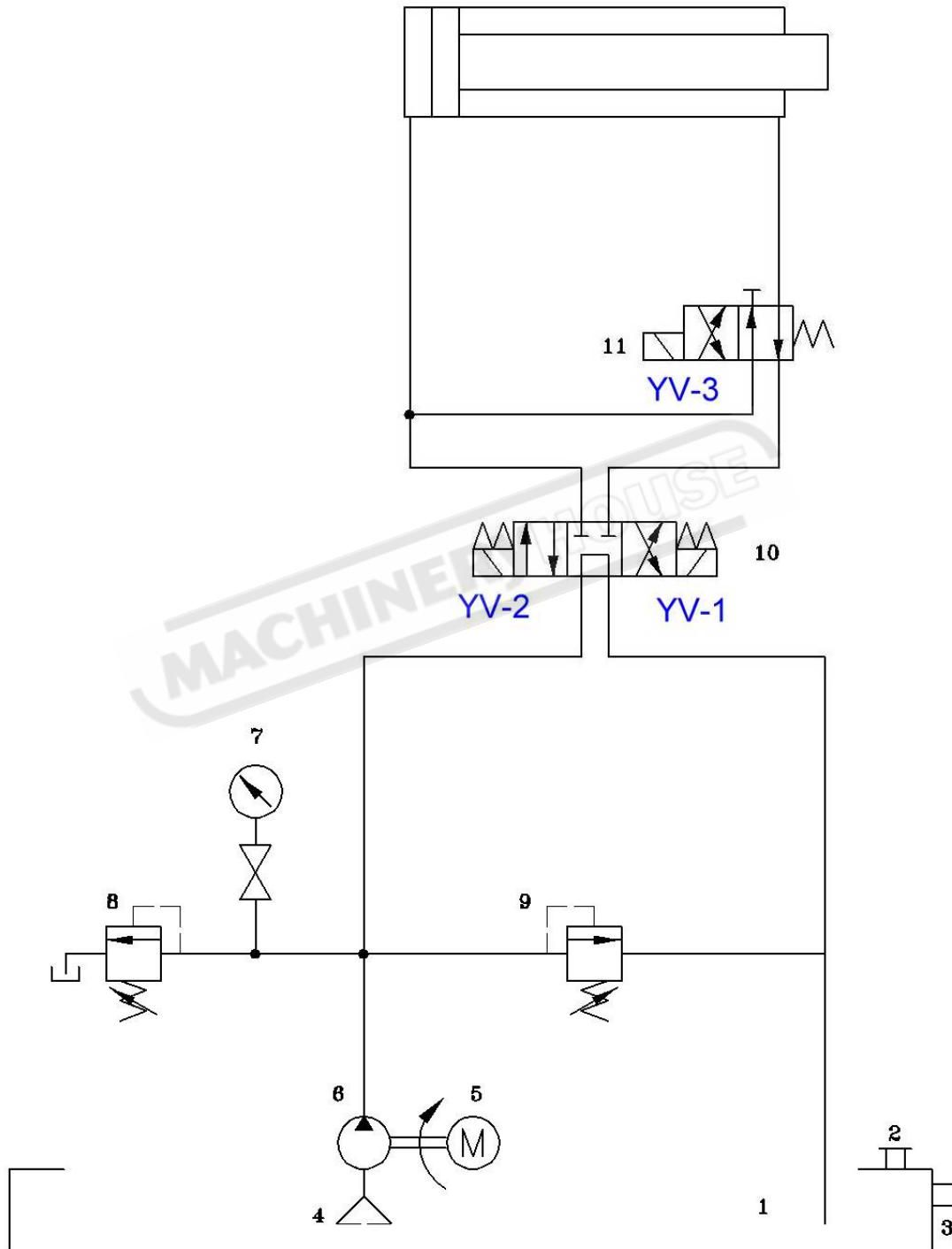


Model: **HBM-40** Part: **Hydraulic Components Assembly** Date: 12/2011

Item	Part Number	Description	產品名稱	Q'ty	Memo
23.	53409NT06	Dust Seal For Pipe Standard	防塵套 3/4	1	
24.	56301A0006012	Hex Bolt M6X12	六角承窩頭螺栓	4	
25.	56303A00006	Spring Washer M6	彈簧墊圈	4	
26.	211603005	Packing	橡膠油封	1	
27.	56278011208K	Pipe 3/4"X240mm	立布 3/4X240mm	1	
28.	56225321212	Reducing Street Elbow	異徑內外牙肘管3/4" 90°	1	
29.	56301D0008025	Bolt M8X25	六角頭螺栓	10	
30.	56303A00008	Spring Washer M8	彈簧墊圈	10	
31.	226103008	Manifold Block	遙控油路板	1	
32.	56301A0005045	Hex Bolt M5X45	六角頭螺栓	4	
33.	56303A00005	Spring Washer M5	彈簧墊圈	4	
34.	56301A0006075	Hex Bolt M6X75	六角承窩頭螺栓	2	
35.	226203006	Manifold Block	油路板	1	
36.	56203210608	45°Joint 3/8TX1/2H	45°接頭 3/8"TX1/2"H	1	
37.	56203310808	90°Joint 1/2TX1/2H	90°接頭 1/2"TX1/2"H	2	
38.	56203810404	90°Joint 1/4TX1/4H	90°接頭 1/4"TX1/4"H	1	
39.	56203310404	90°Joint 1/4TX1/4H	90°接頭 1/4"TX1/4"H	1	
40.	56278010808K	Pipe 1/2"X240mm	立布 1/2X240mm	1	
41.	56301A0008095	Hex Bolt M8X95	六角承窩頭螺栓	2	
42.	56203810404	90°Joint 1/4TX1/4H	90°接頭 1/4"TX1/4"H	1	
43.	56203310404	90°Joint 1/4TX1/4H	90°接頭 1/4"TX1/4"H	1	
44.	56225330404		90°銅內外牙彎頭 1/4"	2	



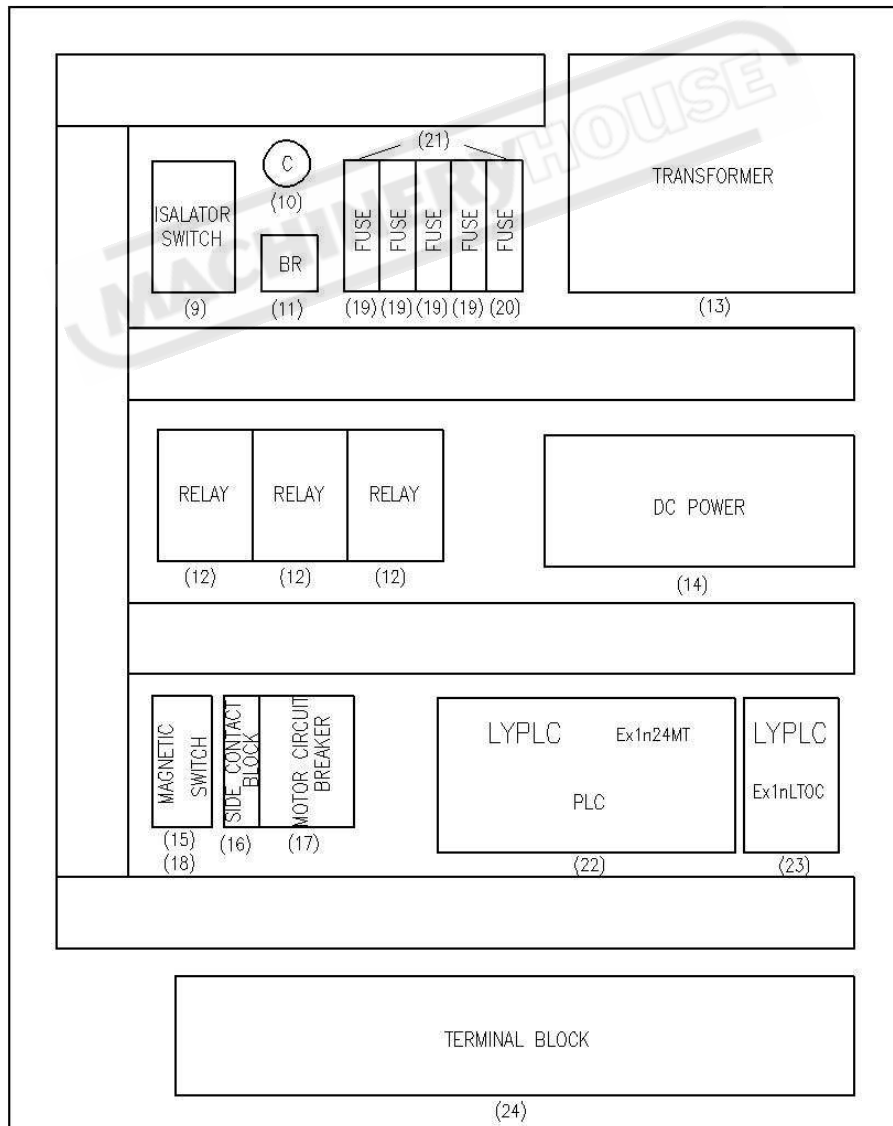
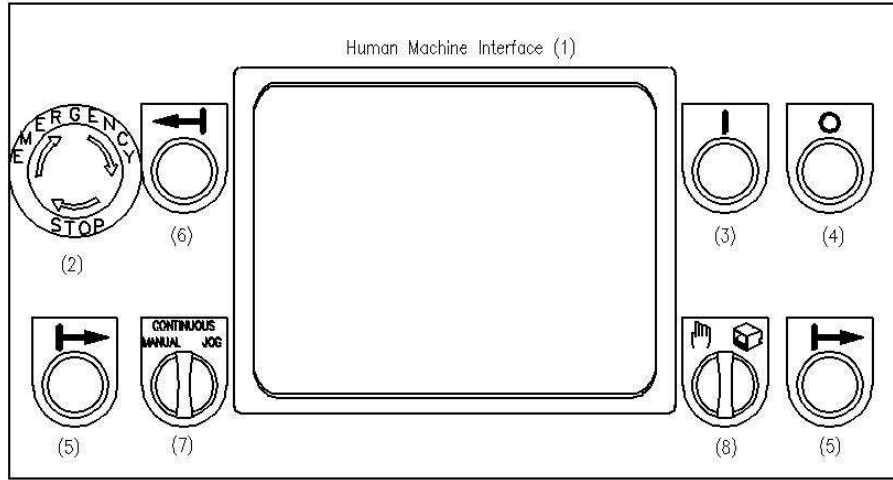
HBM-40 Hydraulic Circuit



6203201 03/2005



HBM-40 Electric Panel Diagram





Sunrise Bending Machine Parts List

Model: **HBM-40** Part: Electrical Components Assembly Date: 12/2011

Item	Part Number	Description	產品名稱	Q'ty	Memo	
1	52503DOPB05S100	Human Machine Interface	人機介面	1	DELTA	
2	52421XB5AS542	Emergency Stop Button	緊急停止	1	TE	
3	52420XB5AW3361	Pump ON Push Button	綠色罩光按鈕	1	TE	
4	52407XB5AL42	Flush Push Button (Red)	泵浦停止-紅色	1	TE	
5	52420ZB5AA3	Push Button (Forward)	平頭按鈕開關-綠(前進)	2	TE	
6	52420ZB5AA2	Push Button (Backward)	平頭按鈕開關-黑(後退)	1	TE	
7	52415ZB5AD3	Selector Switch	選擇開關(三段)旋鈕	1	TE	
8	52415ZB5AG2	Selector Switch	鑰匙選擇開關-二段	1	TE	
9	5HP 50Hz	380V : 52407OT16F3 400V : 52407OT16F3 415V : 52407OT16F3	Isolator Switch	電源開關(連桿 M6)	1	ABB Control OY
	5HP 60Hz	220V : 52407OT25F3 230V : 52407OT25F3 380V : 52407OT16F3 460V : 52407OT25F3 575V : 52407OT16F3	Isolator Switch			
	5HP 60Hz	220V : 52407OT25F3 380V : 52407OT16F3	Isolator Switch (Standard For Taiwan)			
10	522034700UF50V	Capacitor	電容器	1	Kuan Hua(廣華)	
11	52202KBPC2506	Bridge Rectifiers	橋式整流器	1	Chian Hsiang(建祥)	
12	52404SSR10DD	Relay	固態繼電器	3	Telemecanique	
13	220V : 524033802510 230V : 524035752520 380V : 524033802510 460V : 524035752520 575V : 524035752520	Transformer	變壓器	1	Ya Chang(亞成)	
14	52201NED35B	DC Power	電源供應器	1		
15	220V : 52401LC1D18B7 230V : 52401LC1D18B7 380V : 52401LC1D12B7 460V : 52401LC1D18B7 575V : 52401LC1D09B7	Magnetic Switch	電磁接觸器	1	TE	
16	52419GVAN11	Side Contact Block	輔助接點	1	TE	



Model: **HBM-40** Part: Electrical Components Assembly Date: 12/2011

Item	Part Number	Description	產品名稱	Q'ty	Memo
17	220V : 52402GV2ME20 230V : 52402GV2ME20 380V : 52402GV2ME14 460V : 52402GV2ME14 575V : 52402GV2ME10	Motor Circuit Breaker	馬達啓動斷路器	1	TE
18	52419LADN11	Contact Block	輔助接點	1	TE
19	52801A02A	FUSE-2A	保險絲	4	BUSS MANN
20	52801A06A	FUSE-6A	保險絲	1	BUSS MANN
21	52801CFBSCHM1D	Fuse Base	保險絲座	5	BUSS MANN
22	52506EX1N24MT	PLC	可程式控制器	1	LIYAN
23	52599EX291	Signal conversion module	Sin 波轉方波模組	1	LIYAN
24	5270106006204201	Terminal Block	端子台組	1	Wago

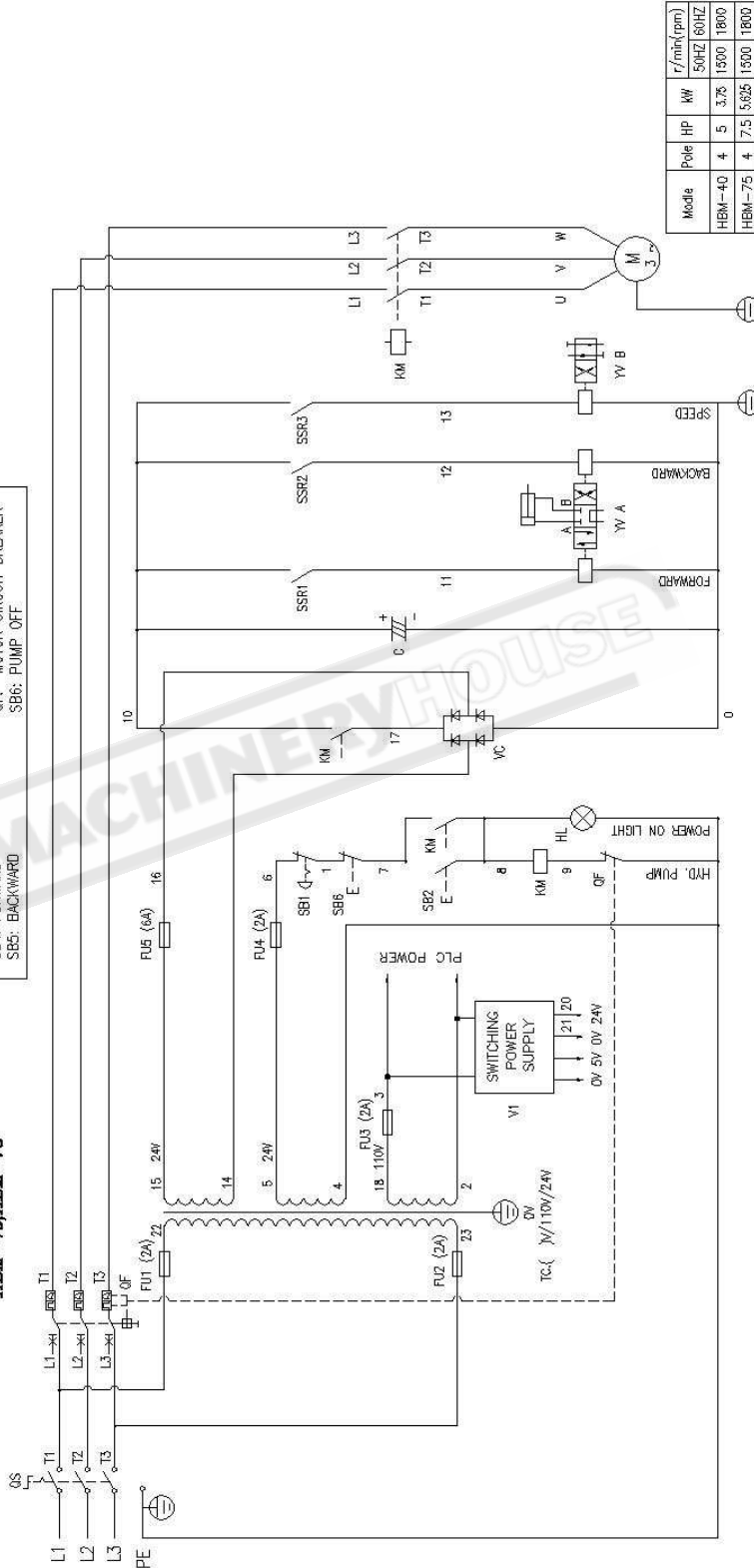


HBM-40 Electrical Circuit

SUNRISE
Fluid Power Inc.

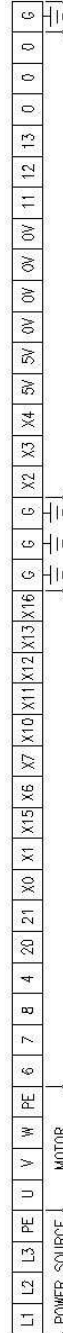
No. 7, Road 12, Industrial Zone,
Taichung City 407, Taiwan, R.O.C.
Tel: 886-4-2359-1190 Fax: 886-4-2359-3409
E-mail: awtkao@ms1.hinet.net

Electrical Circuit HBM-40, HBM-75



Model	HBM-40	HBM-75
HP	5	7.5
KW	3.75	5.625
Phase	3	3
V	380	380
Hz	50	50
AMP'S	8	12.3

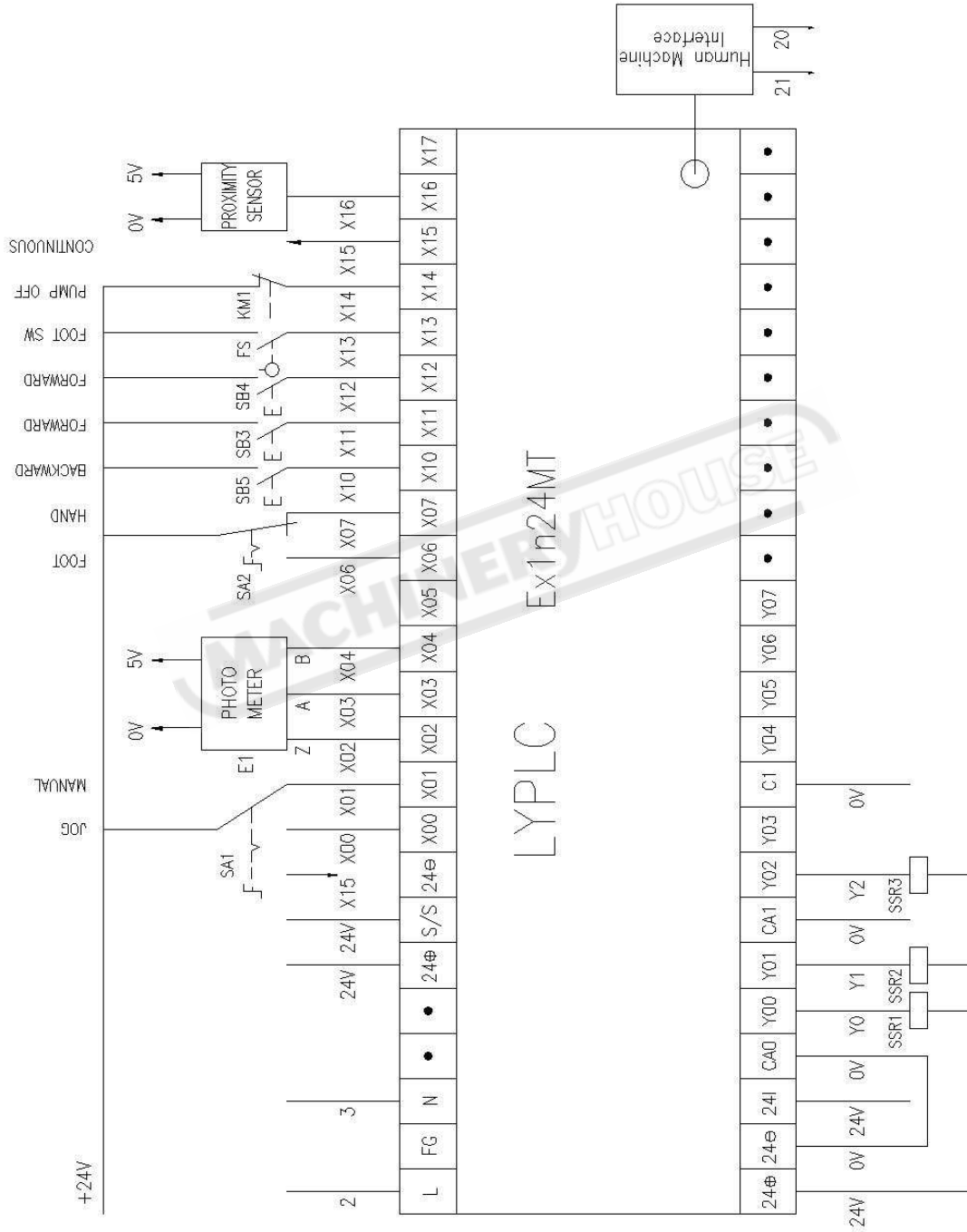
Model	Pole	HP	KW	r/min(rpm)
HBM-40	4	5	3.75	50HZ 1800
HBM-75	4	7.5	5.625	1500 1800



6204201A-1 12/2011



PLC I/O layout



6204201A-2 12/2011